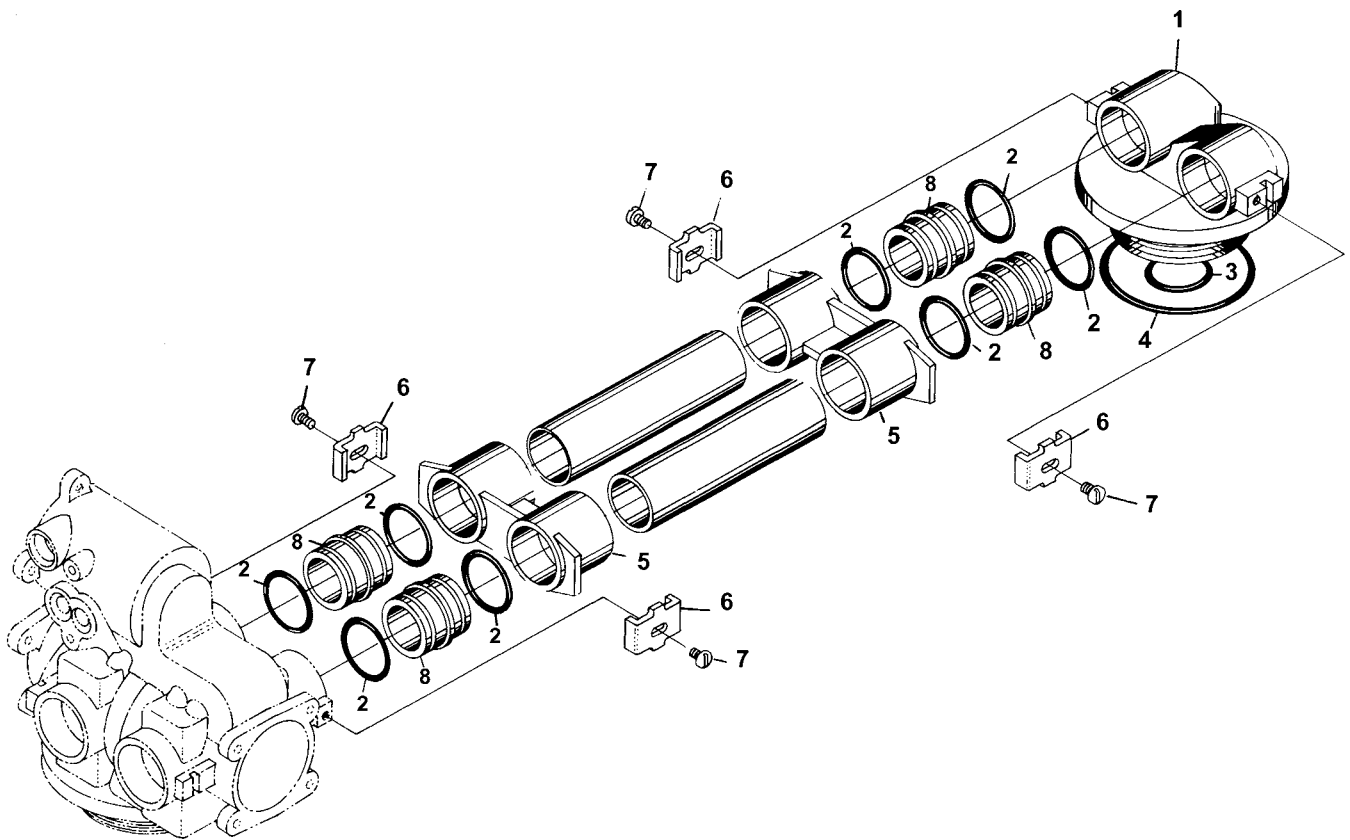
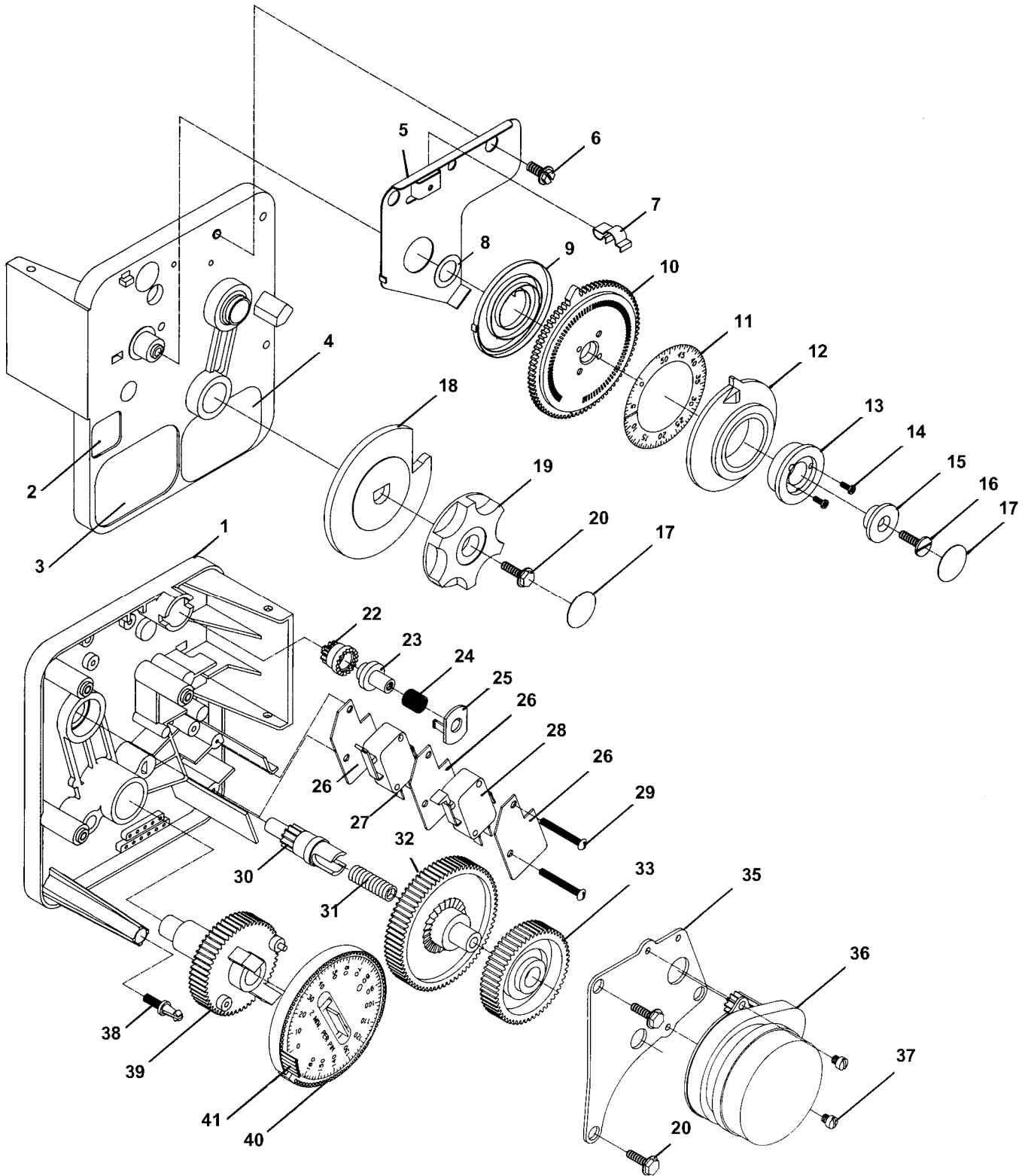


| REF. NO. | PART NO. | DESCRIPTION | QTY. |
|----------|-----------|--|------|
| 1 | N/S | SECOND TANK ADAPTER | 1 |
| 2 | 20561X216 | O-RING | 8 |
| 3 | 20908X115 | O-RING | 1 |
| 4 | 20561X205 | O-RING | 1 |
| 5 | N/S | YOKE | 2 |
| 6 | 20561X201 | HOLD DOWN CLIP | 4 |
| 7 | N/S | 8-32 X 3/8" HEX WSHR HD SCREW | 4 |
| 8 | 20908X215 | COUPLING | 4 |
| 9 | 20908X218 | INTERCONNECT PIPES - SPECIFY TANK SIZE | 2 |



PARTS

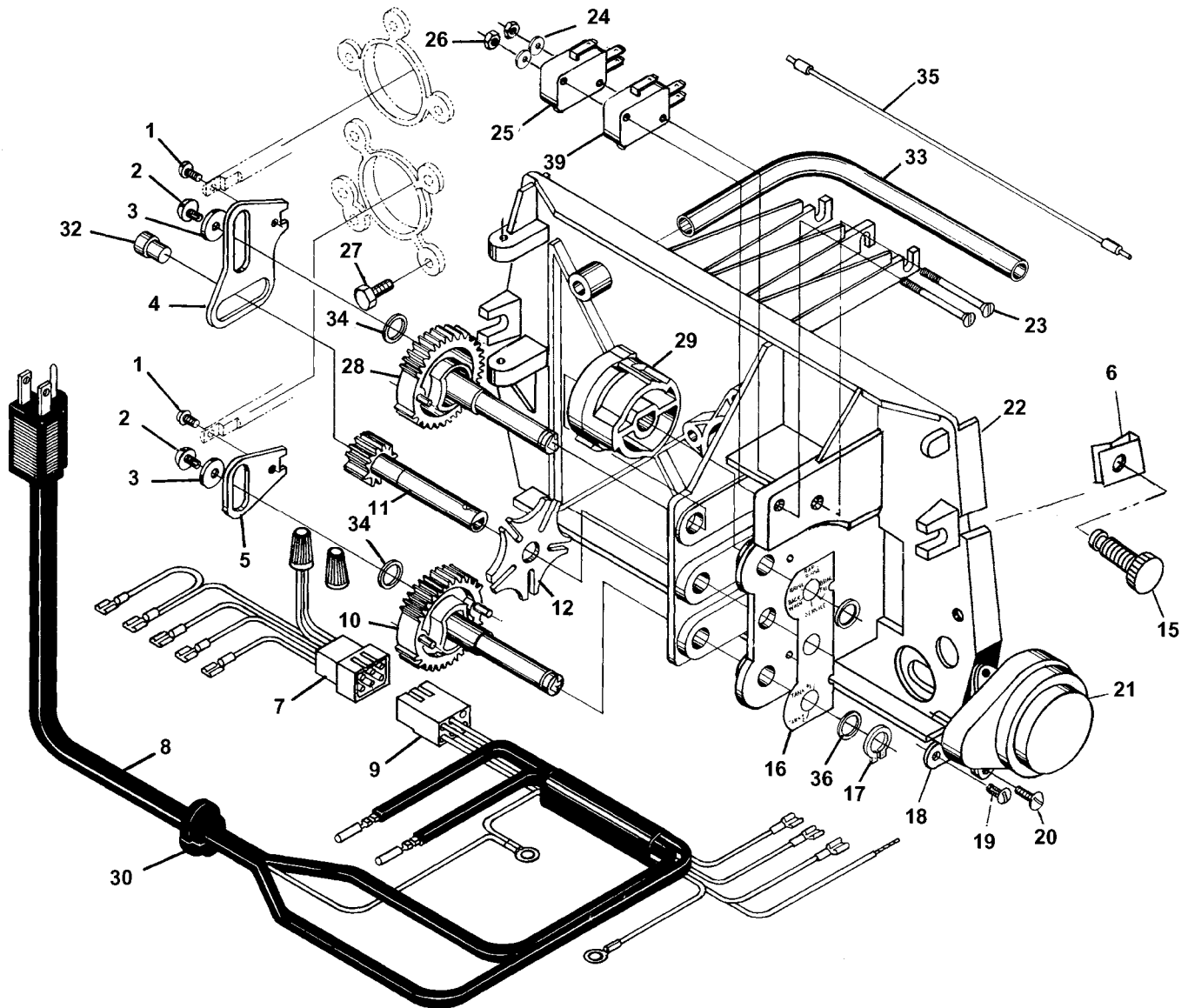


PARTS

| REF. NO. | PART NO. | DESCRIPTION | QTY. |
|-----------|-----------|----------------------------------|------|
| 1 | N/S | TIMER HOUSING ASSY. | 1 |
| 2 | N/S | CAPACITY GALLONS LABEL | 1 |
| 3 | N/S | CAUTION LABEL | 1 |
| 4 | N/S | INSTRUCTION LABEL | 1 |
| 5 | N/S | ACTUATOR PLATE | 1 |
| 6 | N/S | # 8 HEX WASHER HD SCREW | 1 |
| 7 | 20908X114 | SPRING CLIP | 1 |
| 8 | N/S | # 4 PLAIN WASHER | 1 |
| 9 | 20908X113 | SPRING | 1 |
| 10 | N/S | PROGRAM WHEEL DRIVE GEAR | 1 |
| 11 | N/S | 3/4" METER GALLON LABEL | 1 |
| 12 | N/S | ADJUSTING DISC | 1 |
| 13 | N/S | PROGRAM WHEEL COVER | 1 |
| 14 | N/S | 4 - 40 FILL HD SCREW STNLS SCREW | 2 |
| 15 | 20253X111 | PROGRAM WHEEL RETAINER | 1 |
| 16 | 20253X108 | 6-20 X 1/2" FLT HD ST SCREW | 1 |
| 17 | 20251X407 | BUTTON DECAL | 2 |
| 18 | N/S | CYCLE ACTUATOR GEAR | 1 |
| 19 | 20251X405 | KNOB | 1 |
| 20 | 20251X406 | 6-20 X 1/2" HEX WASHER HD SCREW | 4 |
| 21 | N/S | 5-20 X 3/8" SLT RD HD MACH SCREW | 2 |
| 22 | N/S | DRIVE PINION | 1 |
| 23 | N/S | DRIVE PINION CLUTCH | 1 |
| 24 | 20563X140 | METER CLUTCH SPRING | 1 |
| 25 | 20563X139 | RETAINER | 1 |
| 26 | 20251X429 | INSULATOR | 3 |
| 27 | 20908X201 | SWITCH | 1 |
| 28 | 20251X431 | SWITCH | 1 |
| 29 | 20251X432 | 4-40 X 1/8" PAN HD MACH SCREW | 2 |
| 30 | 20251X419 | IDLER SHAFT | 1 |
| 31 | N/S | IDLER SHAFT SPRING | 1 |
| 32 | 20251X421 | IDLER GEAR | 1 |
| 33 | 20251X422 | DRIVE GEAR | 1 |
| 35 | 20251X424 | MOTOR MOUNTING PLATE | 1 |
| 36 | 20251X425 | MOTOR - 120 V 60 Hz - 1/30 RPM | 1 |
| 37 | 20251X426 | 6-32 X 1/8" FIL HD MACH SCREW | 2 |
| 38 | 20251X411 | SPRING CLIP | 1 |
| 39 | N/S | MAIN DRIVE GEAR | 1 |
| 40 | N/S | PROGRAM WHEEL ASSY. | 1 |
| 41 | 20251X417 | ROLL PIN | 20 |
| NOT SHOWN | N/S | 6 X 1/4" HEX WASHER HD SCREW | 1 |

N/S = Non Stocked Item





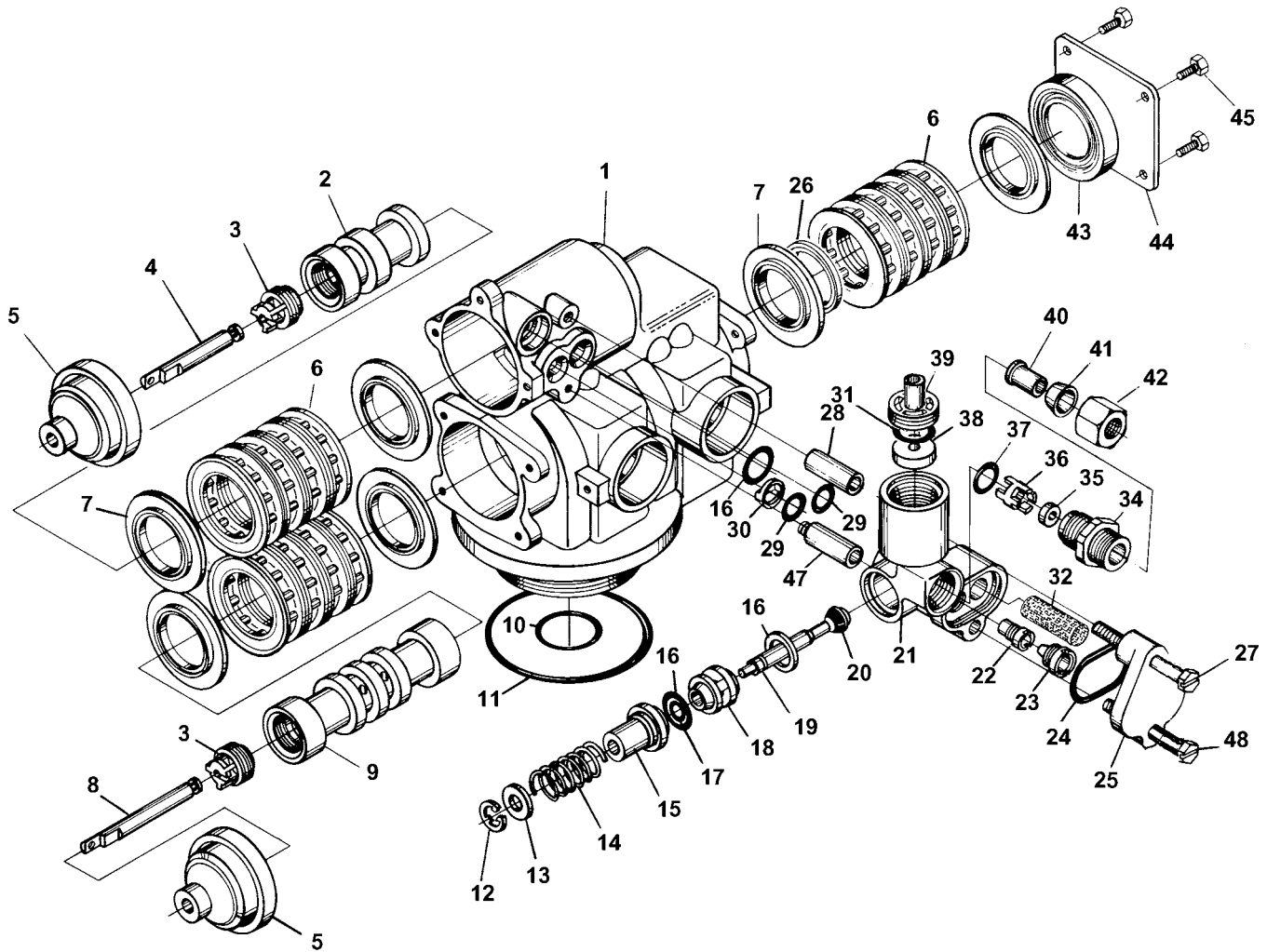
PARTS

| REF. NO. | PART NO. | DESCRIPTION | QTY. |
|-----------|-----------|-----------------------------------|------|
| 0 | 20908X200 | 9000 TIMER ASSY. 1/30 RPM | 1 |
| 1 | N/S | 4-40 X 3/16 SCREW | 2 |
| 2 | N/S | 6-20 HEX WASHER HD SCREW | 2 |
| 3 | 20561X251 | WASHER | 2 |
| 4 | N/S | UPPER PISTON ROD LINK | 1 |
| 5 | N/S | LOWER PISTON ROD LINK | 1 |
| 6 | N/S | 8-32 "U" TYPE NUT CLIP | 2 |
| 7 | N/S | TIMER WIRING HARNESS | 1 |
| 8 | 20251X101 | POWER CORD | 1 |
| 9 | N/S | DRIVE WIRING HARNESS | 1 |
| 10 | 20908X203 | LOWER DRIVE GEAR ASSY. | 1 |
| 11 | 20908X204 | DRIVE GEAR | 1 |
| 12 | 20908X205 | GENEVA WHEEL | 1 |
| 15 | N/S | COVER SCREW ASSY. | 2 |
| 16 | N/S | POSITION DECAL | 1 |
| 17 | N/S | RETAINING RING | 1 |
| 18 | N/S | GROUND PLATE | 1 |
| 19 | N/S | 6 X 1/4" HEX WASHER SCREW | 1 |
| 20 | 20251X426 | 6-32 X 1/4 RD HD SCREW | 2 |
| 21 | 20908X206 | DRIVE MOTOR KIT 110 V - 60 Hz | 1 |
| 22 | N/S | CONTROL PANEL | 1 |
| 23 | N/S | 4-40 X 1-3/8" F H MACH SCREW | 2 |
| 24 | N/S | # 4 LOCK WASHER | 2 |
| 25 | 20251X113 | MICRO SWITCH | 1 |
| 26 | N/S | 4-40 HEX NUT | 2 |
| 27 | N/S | 10-24 X 3/4 HEX WASHER HEAD SCREW | 7 |
| 28 | 20908X207 | UPPER DRIVE GEAR ASSY. | 1 |
| 29 | N/S | TRIPLE CAM | 1 |
| 30 | 20251X102 | STRAIN RELIEF | 1 |
| NOT SHOWN | N/S | DRIVE GEAR REATINING RING | 1 |
| 32 | N/S | UPPER PISTON ROD LINK GUIDE PIN | 1 |
| 33 | N/S | CABLE GUIDE | 1 |
| 34 | N/S | THRUST WASHER | 2 |
| 35 | 20908X209 | METER CABLE ASSY. 1" METER | 1 |
| | 20908X208 | METER CABLE ASSY. 3/4" METER | 1 |
| 36 | N/S | SPACER | 2 |
| NOT SHOWN | 20251X114 | INSULATOR | 1 |
| 39 | 20908X210 | PROGRAM MICRO SWITCH | 1 |
| NOT SHOWN | N/S | TOP COVER | 1 |
| NOT SHOWN | N/S | BOTTOM COVER | 1 |

N/S = Non Stocked Item

Shaded REF. No. Indicates Assembly or Kit





PARTS

| REF. NO. | PART NO. | DESCRIPTION | QTY. |
|----------|-----------|--|------|
| 1 | N/S | VALVE BODY ONLY | 1 |
| 2 | N/S | UPPER PISTON | 1 |
| 3 | 20251X218 | PISTON ROD RETAINER | 2 |
| 4 | N/S | UPPER PISTON ROD | 1 |
| 5 | 20561X212 | END PLUG ASSY. | 2 |
| 5A | 20908X212 | UPPER PISTON ASSY. INCL. (1) EA. # 2 THRU # 5 PLUS SCREW & LINK | 1 |
| 6 | 20561X207 | SPACER | 12 |
| 7 | 20561X202 | SEAL | 16 |
| 7A | 20561X253 | SEAL & SPACER KIT UPPER INCL. (5) # 7 AND (4) # 6 | 1 |
| 8 | N/S | LOWER PISTON ROD | 1 |
| 9 | N/S | LOWER PISTON | 1 |
| 9A | 20908X213 | LOWER PISTON ASSY. INCL. (1) Each # 3, 5, 8 & 9 PLUS SCREW & LINK | 1 |
| 9B | 20908X211 | LOWER SEAL & SPACER KIT INCL. (11) # 7, (8) # 6 & (1) # 26 | 1 |
| 10 | 20908X115 | O RING | 1 |
| 11 | 20561X205 | O-RING | 1 |
| 12 | N/S | RETAINING RING | 1 |
| 13 | N/S | NYLON BRINE VALVE WASHER | 1 |
| 14 | N/S | BRINE VALVE SPRING | 1 |
| 15 | N/S | BRINE VALVE CAP | 1 |
| 16 | 20561X220 | O-RING | 3 |
| 17 | 20251X312 | QUAD RING | 1 |
| 18 | N/S | BRINE VALVE SPACER | 1 |
| 19 | N/S | BRINE VALVE STEM | 1 |
| 20 | 20251X315 | BRINE VALVE SEAT | 1 |
| 20A | 20908X116 | BRINE ASSY. INCL. (1) EA. # 12 THRU # 15, (2) EA. # 16, (1) EA. # 17 THRU # 20 | 1 |
| 21 | N/S | INJECTOR BODY | 1 |
| 22 | 20251X206 | INJECTOR THROAT, # 1 WHITE | 1 |
| | 20251X242 | INJECTOR THROAT, # 2 BLUE | 1 |
| 23 | 20251X205 | INJECTOR NOZZLE, # 1 WHITE | 1 |
| | 20251X241 | INJECTOR NOZZLE, # 2 BLUE | 1 |
| 24 | 20561X221 | O-RING | 1 |
| 25 | 20561X226 | INJECTOR COVER | 1 |
| 26 | N/S | SPACER | 1 |
| 27 | N/S | 10-24 X 1-3/4 HEX HD MACH SCREW | 1 |
| 28 | N/S | INJECTOR SPACER | 1 |
| 29 | 20561X219 | O-RING | 2 |
| 30 | 20561X248 | AIR DISPERSER | 1 |
| 31 | N/S | O-RING | 1 |
| 32 | 20561X204 | INJECTOR SCREEN | 1 |
| 34 | 20561X241 | BLFC FITTING | 1 |
| 35 | 20251X318 | .5 GPM BLFC BUTTON | 1 |
| 36 | 20561X240 | BLFC BUTTON RETAINER | 1 |
| 37 | 20561X239 | O-RING | 1 |

| REF. NO. | PART NO. | DESCRIPTION | QTY. |
|----------|-----------|---|------|
| 38 | 20251X266 | FLOW CONTROL BUTTON 1.5 GPM | 1 |
| | 20251X267 | FLOW CONTROL BUTTON 2.0 GPM | 1 |
| | 20251X268 | FLOW CONTROL BUTTON 2.4 GPM | 1 |
| | 20251X269 | FLOW CONTROL BUTTON 3.0 GPM | 1 |
| | 20251X270 | FLOW CONTROL BUTTON 3.5 GPM | 1 |
| | 20251X271 | FLOW CONTROL BUTTON 4.0 GPM | 1 |
| | 20251X272 | FLOW CONTROL BUTTON 5.0 GPM | 1 |
| 39 | 20561X246 | DLFC BUTTON RETAINER | 1 |
| 40 | 20251X303 | 3/8" TUBE INSERT | 1 |
| 41 | 20251X305 | 3/8" FERRULE | 1 |
| 42 | 20251X304 | 3/8" TUBE NUT | 1 |
| 42A | 20908X214 | INJECTOR/DRAIN ASSY. INCL. (1) Each # 20A, # 21 THRU # 27, (2) # 29 & (1) Each # 30 THRU # 42 - .5 BLFC & NO. 1 INJECTOR/THROAT FURNISHED SPECIFY DLFC REQUIRED | 1 |
| 43 | N/S | STUB END PLUG | 1 |
| 44 | N/S | END PLATE | 1 |
| 45 | N/S | 10-24 X 3/8" HEX WASHER HD SCREW | 4 |
| 47 | N/S | BRINE VALVE STAND OFF | 1 |
| 48 | 20561X214 | 10-24 X 1-3/16" HEX WSHR HD SCREW | 1 |

N/S = Non Stocked Item

Shaded REF. No. Indicates Assembly or Kit