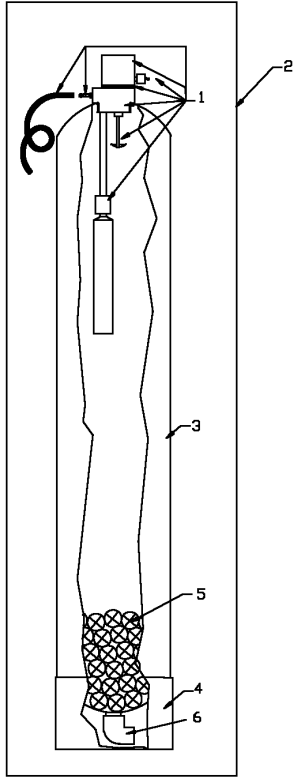
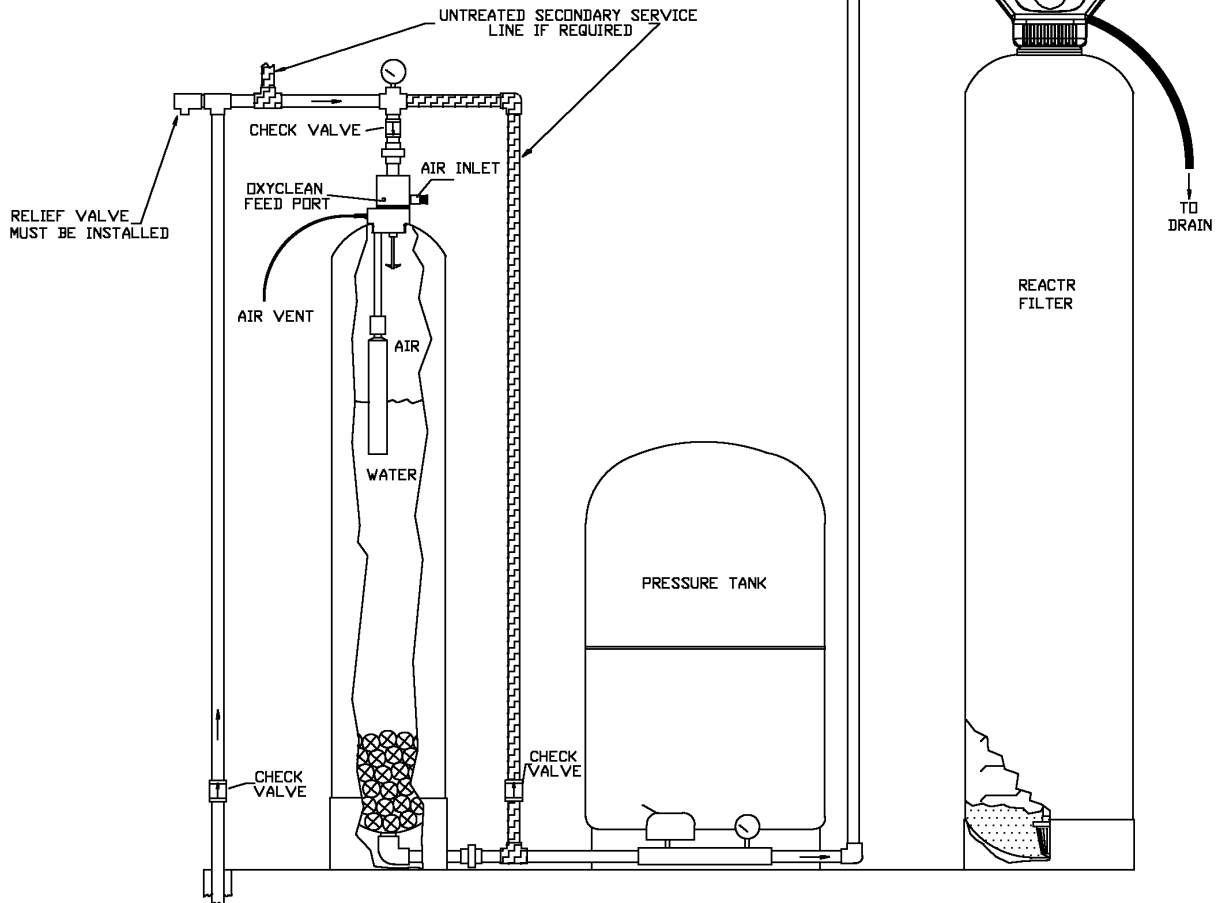


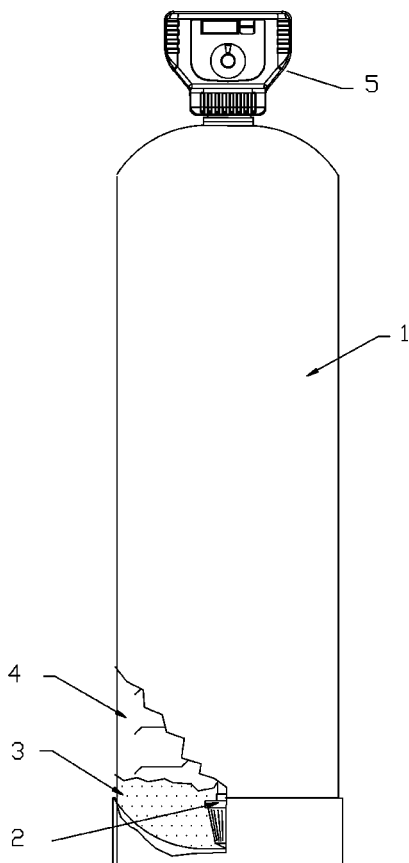
Parts Diagram - Reactr "RF" Series Tanks



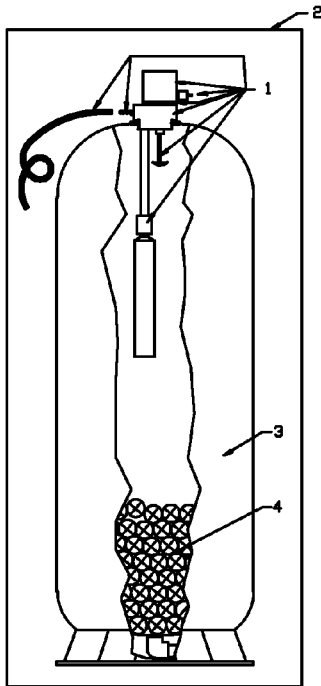
REF NO.	PART NO.	DESCRIPTION
1	65555X330	REACTR MANIFOLD ASSEMBLY - 5.0 GPM INCLUDES : MANIFOLD, REACTR BODY, DIAPHRAMS, DIFFUSER, AIR INLET VALVE CHECK, FLOAT ASSEMBLY, CHLORINE PORT PLUG, EXHAUST VENT HOSE BARB AND TUBING
2	65555X000 "RF" SERIES	REACTR TANK & MANIFOLD ASSEMBLY COMPLETE INCLUDES : MANIFOLD, REACTR BODY, DIAPHRAMS, DIFFUSER, AIR INLET VALVE CHECK, FLOAT ASSEMBLY, CHLORINE PORT PLUG, EXHAUST VENT HOSE BARB, TUBING, 9" X 48" POLYGLASS TANK, AERATION BALLS, BOTTOM ELBOW ASSEMBLY
3	30948X000	9" X 48" TANK W/ BASE
4	32009X103	9" TANK BASE
5	65555X214	AERATION BALLS - 50 PER PKG. - 1 REQ'D.
6	65555X229	FITTING PACKAGE - REACTR TANK BOTTOM



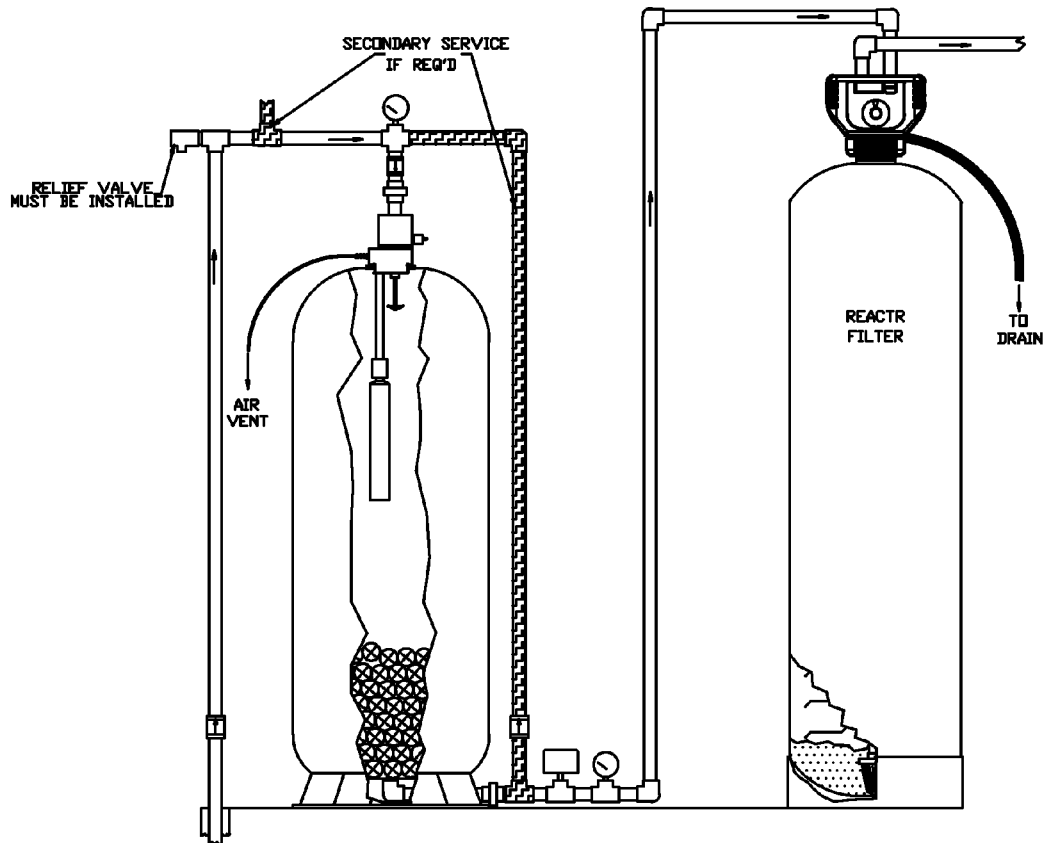
PARTS



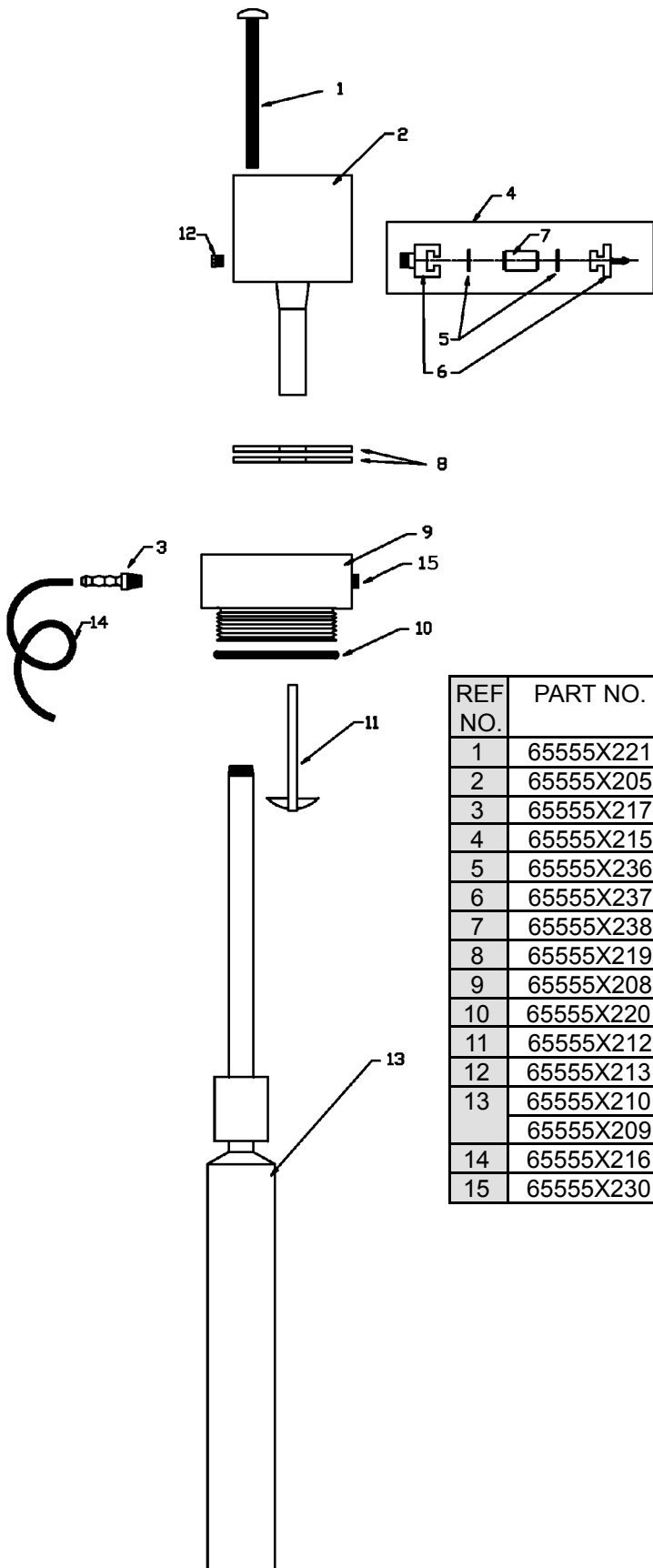
REF NO.	DESCRIPTION	RF10 UT10	RF15 UT15	RF20 UT20	RF25 UT25	RF30 UT30	UT40
1	TANK PART NO.	30948X100	31054X100	31348X100	31354X100	31465X100	31665X100
	W/ BASE SIZE	9" X 48"	10" X 54"	13" X 48"	13" X 54"	14" X 65"	16" X 65"
1	VORTECH TANK PART NO.	30948V100	31054V100	31348V100	31354V100	31465V100	31665V100
	W/ BASE SIZE	9" X 48"	10" X 54"	13" X 48"	13" X 54"	14" X 65"	16" X 65"
2	DISTRIBUTOR & TUBE ASSY.	330048X11	330054X11	330048X11	330054X11	330065X11	330065X11
3	"D" GRAVEL UNDERBED DG20 = 20 LBS. DG50 = 50 LBS.	(1) DG20	(1) DG20	(1) DG50	(1) DG50	(1) DG50	(1) DG70
4	REACTR BLEND MEDIA RB75 = 3/4 CU. FT. RB10 = 1 CU. FT.	(1) RB10	(2) RB75	(2) RB10	(2) RB75 (1) RB10	(3) RB10	(4) RB10
5	CONTROL VALVE W/ DLFC	5.0	5.0	7.0	7.0	10.0	15.0
	SIGNATURE VALVE W/ PLASTIC BYPASS & S.S. YOKE 3/4"	20005X521	20005X521	20005X523	20005X523	20005X524	20005X525
	SIGNATURE VALVE W/ PLASTIC BYPASS & S.S. YOKE 1"	20005X531	20005X531	20005X533	20005X533	20005X534	20005X535
	SIGNATURE VALVE W/O BYPASS & YOKE	20005X541	20005X541	20005X543	20005X543	20005X544	20005X545
	SIGNATURE VALVE W/ PLASTIC BYPASS & YOKE 3/4"	20005X551	20005X551	20005X553	20005X553	20005X554	20005X555
	SIGNATURE VALVE W/ PLASTIC BYPASS & YOKE 1"	20005X561	20005X561	20005X563	20005X563	20005X564	20005X565
	SIGNATURE VALVE W/ STAINLESS STEEL BYPASS 3/4"	20005X571	20005X571	20005X573	20005X573	20005X574	20005X575
	SIGNATURE VALVE W/ STAINLESS STEEL BYPASS 1"	20005X581	20005X581	20005X583	20005X583	20005X584	20005X585



REF NO.	PART NO.	DESCRIPTION
1	65555X340	REACTR MANIFOLD ASSEMBLY - 5.0 GPM INCLUDES : MANIFOLD, REACTR BODY, DIAPHRAGMS, DIFFUSER, AIR INLET VALVE CHECK, FLOAT ASSEMBLY, CHLORINE PORT PLUG, EXHAUST VENT HOSE BARB AND TUBING
2	65555X010 "UT30" SERIES	"UT30" REACTR TANK & MANIFOLD ASSY. COMPLETE INCLUDES : MANIFOLD, REACTR BODY, DIAPHRAGMS, DIFFUSER, AIR INLET VALVE CHECK, FLOAT ASSEMBLY, CHLORINE PORT PLUG, EXHAUST VENT HOSE BARB, 16" X 44" "UT" TANK, AIR VENT TUBING AND AERATION BALLS
	65555X020 "UT40" SERIES	"UT40" REACTR TANK & MANIFOLD ASSY. COMPLETE INCLUDES : MANIFOLD, REACTR BODY, DIAPHRAGMS, DIFFUSER, AIR INLET VALVE CHECK, FLOAT ASSEMBLY, CHLORINE PORT PLUG, EXHAUST VENT HOSE BARB, 16" X 56" "UT" TANK, AIR VENT TUBING AND AERATION BALLS
	65555X030 "UT40S" SERIES	"UT40S" REACTR TANK & MANIFOLD ASSY. COMPLETE INCLUDES : MANIFOLD, REACTR BODY, DIAPHRAGMS, DIFFUSER, AIR INLET VALVE CHECK, FLOAT ASSEMBLY, CHLORINE PORT PLUG, EXHAUST VENT HOSE BARB, 21" X 35" "UT" TANK, AIR VENT TUBING AND AERATION BALLS
3	30030X100	16" X 44" "UT" TANK ONLY
	30040X100	16" X 56" "UT40" TANK ONLY
	30040X101	21" X 35" "UT40S" TANK ONLY
4	65555X214	AERATION BALLS - 50 PER PKG. - 2 REQ'D.



PARTS



REF NO.	PART NO.	DESCRIPTION
1	6555X221	SCREW 1/4-20 X 3.5" S.S. PHILLIPS
2	6555X205	REACTR BODY W/ NOZZLE & THROAT ONLY - 5.0 GPM
3	6555X217	HOSE BARB - 1/4" X 1/4" NPT-M
4	6555X215	AIR INTAKE VALVE CHECK ASSEMBLY
5	6555X236	AIR INTAKE VALVE CHECK VITON O-RING - 2 REQ'D.
6	6555X237	AIR INTAKE VALVE CHECK BODY ASSEMBLY ONLY
7	6555X238	AIR INTAKE VALVE CHECK ONLY
8	6555X219	DIAPHRAGMS - 2 REQ'D.
9	6555X208	MANIFOLD - REACTR ONLY
10	6555X220	O-RING - MANIFOLD TO TANK SEAL
11	6555X212	DIFFUSER W/ SCREWS
12	6555X213	1/8" NPT PLASTIC PIPE PLUG
13	6555X210	FLOAT ASSEMBLY FOR "RF" SERIES
	6555X209	FLOAT ASSEMBLY FOR "UT" SERIES / HYDROXR
14	6555X216	3/8" OD X 1/4" ID X 12 FT. VENT TUBING
15	6555X230	1/4" NPT PLASTIC PIPE PLUG