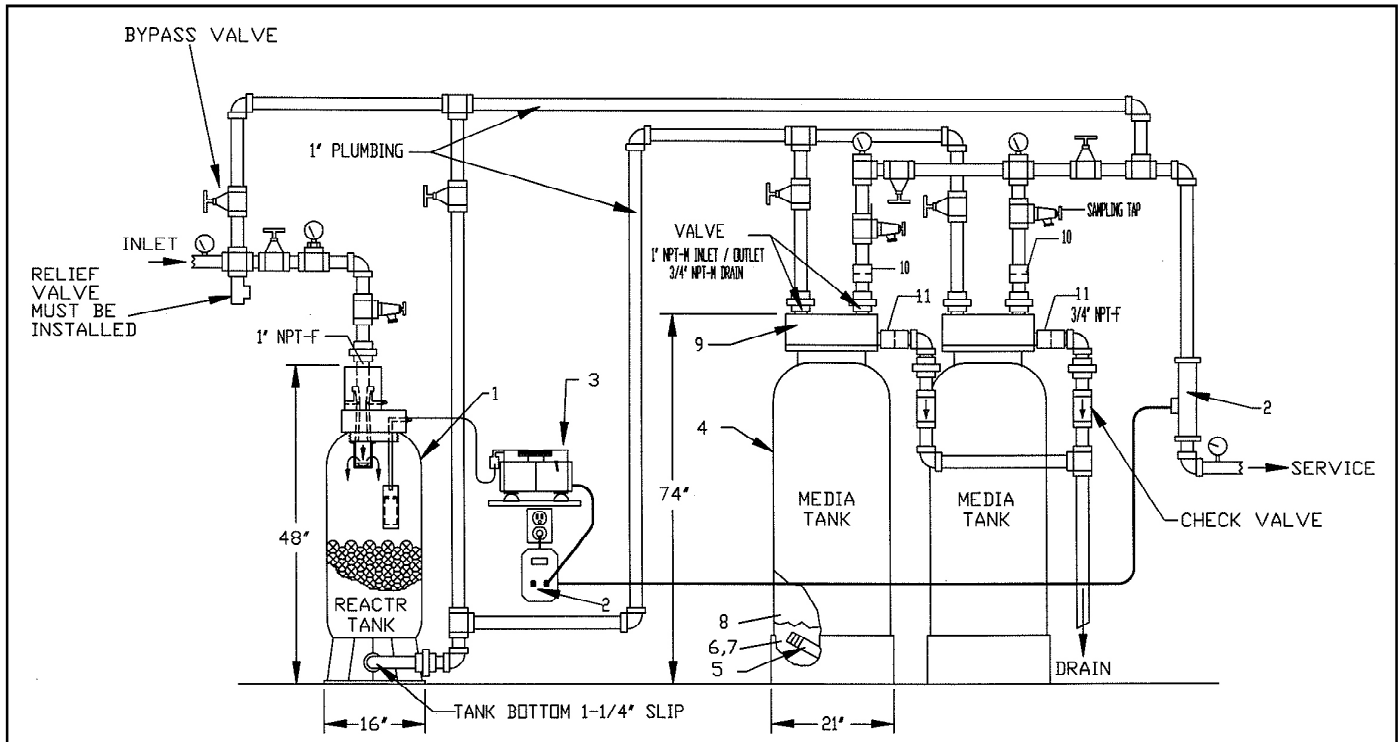


COMMERCIAL



The Commercial **REACTRVS™** Water Treatment System represents an advanced innovation in the treatment of water using aeration and filtration, eliminating the use of salt and costly chemicals.

Specifically designed for operation with variable speed, constant pressure well pump systems, this system efficiently mixes ambient air with water to convert aesthetic contaminants into particulate form, which are then removed by the filters.

This **one simple system** will....

- Eliminate Iron Stains and Taste
- Eliminate Manganese Stains and Taste
- Neutralize low pH (acid water)
- Eliminate Sulfur Stains and Odor
- Eliminate Sediment Problems

The Commercial **REACTR™** Water Treatment System is truly a unique innovation in reducing these problems from water.

- Fully Automatic Timer Controls
- Each filter tank backwashes individually allowing service water at all times
- Available for two different configurations
 - Standard pressurized system (as shown above)
 - Filtration prior to atmospheric tank with treated water backwash
- Non-Bypass raw water during backwash
- Custom designs to meet your special needs

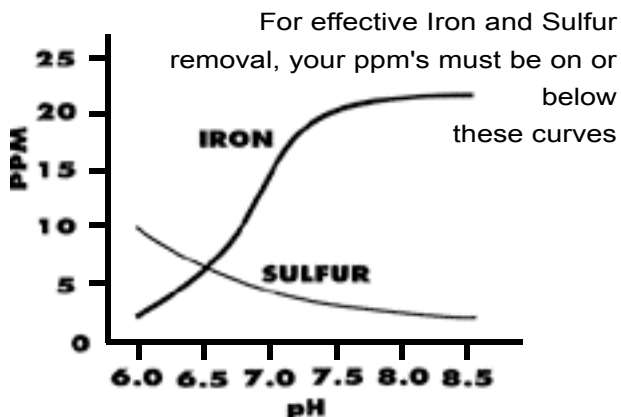
Manganese Removal

REACTR™ capability to remove Manganese from water is critically dependent on the Iron and pH levels as shown below:

If the Iron to Manganese ratio is: Then the pH must be at least:

10:1	7.0
5:1	7.8
1:1	8.3
0:1	8.5

Iron and Sulfur Removal



- * The pH can be increased by feeding soda ash or caustic soda, *prior* to the **REACTR™** tank.
- ** Additional equipment is required for water containing organic and / or bacteria versions.
- **REACTR™** Blend is the media used in the below listed standard models. Periodic replenishing of Neutralizer into the filter tanks will be required for water with less than 7.0 pH. (Normally 6 to 12 months, depending on actual pH and water usage.) Please consult factory if your water exceeds above limitations and a custom system will be designed.

COMMERCIAL

MODEL NUMBERS		SERVICE GPM		FILTER TANK		BACK WASH GPM	TOTAL MEDIA CU FT	FE & MN CAPACITY BETWEEN BACKWASH	SHIPPING WEIGHT(LBS.) STANDARD
STANDARD PRESSURE SYSTEM	CLEAN BACKWASH SYSTEMS	INTER-MITENT *	CONT-INOUS	SIZE	QTY.				
CRF25-102VS	CRF25-102VSC	14	9	13" x 54"	2	7	5	75,000 PPM	518
CRF40-102VS	CRF40-102VSC	20	14	16" x 65"	2	12	8	120,000 PPM	834
CRF50-102VS	CRF50-102VSC	22	18	18" x 65"	2	15	10	150,000 PPM	1,054
CRF70-102VS	CRF70-102VSC	-	24	21" x 62"	2	20	14	210,000 PPM	1,370
CRF50-103VS	CRF50-103VSC	-	30	18" x 65"	3	15	15	225,000 PPM	1,424
CRF70-103VS	CRF70-103VSC	-	36	21" x 62"	3	20	21	315,000 PPM	2,071
CRF100-153VS	CRF100-153VSC	-	45	24" x 72"	3	30	30	450,000 PPM	2,875
CRF140-202VS	CRF140-202VSC	-	50	30" x 72"	2	45	28	420,000 PPM	2,991
CRF100-154VS	CRF100-154VSC	-	60	24" x 72"	4	30	40	600,000 PPM	3,802
CRF180-202VS	CRF180-202VSC	-	70	36" x 72"	2	65	36	540,000 PPM	4,480
CRF140-203VS	CRF140-203VSC	-	75	30" x 72"	3	45	42	630,000 PPM	4,666
CRF240-202VS	CRF240-202VSC	-	100	42" x 72"	2	90	48	720,000 PPM	6,485
CRF180-203VS	CRF180-203VSC	-	100	36" x 72"	3	65	54	810,000 PPM	6,448
CRF140-204VS	CRF140-204VSC	-	100	30" x 72"	4	45	56	840,000 PPM	6,159
CRF180-204VS	CRF180-204VSC	-	125	36" x 72"	4	65	72	1,080,000 PPM	8,494
CRF240-203VS	CRF240-203VSC	-	150	42" x 72"	3	90	72	1,080,000 PPM	9,501
CRF180-205VS	CRF180-205VSC	-	175	36" x 72"	5	65	90	1,350,000 PPM	10,540
CRF240-204VS	CRF240-204VSC	-	200	42" x 72"	4	90	96	1,440,000 PPM	12,545

- * Intermittent flow rates must be for a period of less than 10 minutes/hour.
- At rated GPM, the inlet PSI at **REACTR™** Manifold must be at least 25 PSI higher than max PSI desired at service.
- Individual spec drawings are available for all models listed. Consult factory.
- Larger systems are available. Please consult factory.